



## LED lighting system Flags and Banners



- More visibility by movement and light
- System International patent for global flag light emission with energy efficiency
- Unique visual and Uniform lighting
  - Economy
- Light output management
  - +35 000 hours
- Made 100% in Hollande and western of Europe
- 2 Years warranty

*Using flags and banners is the way to be better visible.*

*The continuous movement catches the eye, and the attention of passing audience is naturally drawn to it.*

*Recently scientific research has proven that movement in combination with light creates the highest visual attention value.*

*This unique lighting system contains of power LEDs which are arranged around the pole in a circular unit.*

*Because of this circular setting, it doesn't matter from which angle the wind is coming: the flag or banner is always fully illuminated.*

*The powerful CREE LEDs create a clear and uniform light distribution.*

*The PoleLed lighting unit is applicable to almost every type of existing and new poles, both made of wood, aluminum, and polyester, either conical or cylindrical.*

*The PoleLed lighting resists at the desert environment.*

- PoleLed Basic (poles up to 115 mm Ø)
- PoleLed Extended (poles up to 145 mm Ø)



## LED lighting system Flags and Banners

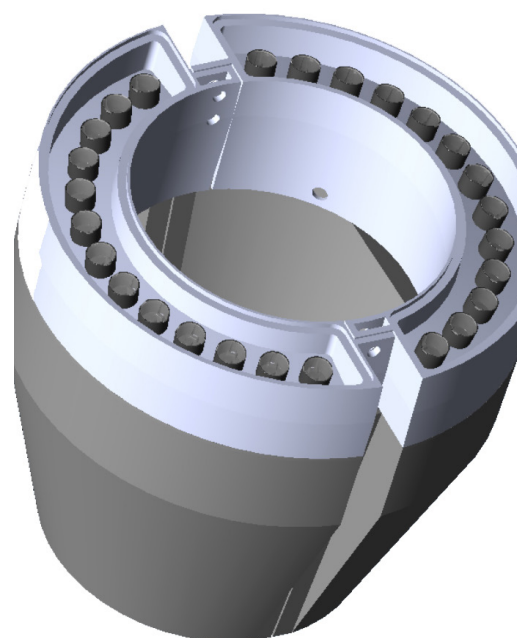
### ELECTRICAL SPECIFICATIONS

Voltage	220 ÷ 240 V ac using power supply
Frequency	50 - 60 Hz
Electrical safety class	Classe II
Power supply efficiency	90%

### MECHANICAL FEATURES

Body	Die-cast aluminium
Glass	Tempered extra clear, 4-mm thick
External screws	A2 stainless steel
Led Lens	11° and 20°
Ingress protection	IP 66
Impact resistance	IK07- 2j

### DETAILS



### TYPE 11° or 20° OPTICS

Model	n.LED	LED flux lm@5000k	CRI	Power W	Efficacy lm/W mini	Sizes cm
25 watt	12	2300	70	26	88	23x18
45 watt	10	5000	70	47	90	26x21